



MEDIA ADVISORY

Contact: Ali Soule
305-520-2105 (office)
ali.soule@allaboardflorida.com

TEMPORARY GRADE CROSSING CLOSURES OF 79TH AND 82ND STREETS EXTENDED

What: Additional time is needed to complete the construction improvements at the intersections of the Florida East Coast Railway and 79th and 82nd Streets in the City of Miami.

Where & When: NE 79th Street and the Florida East Coast Railway
Sunday, February 12, 6 p.m. through **Thursday, February 23, 6 p.m.**

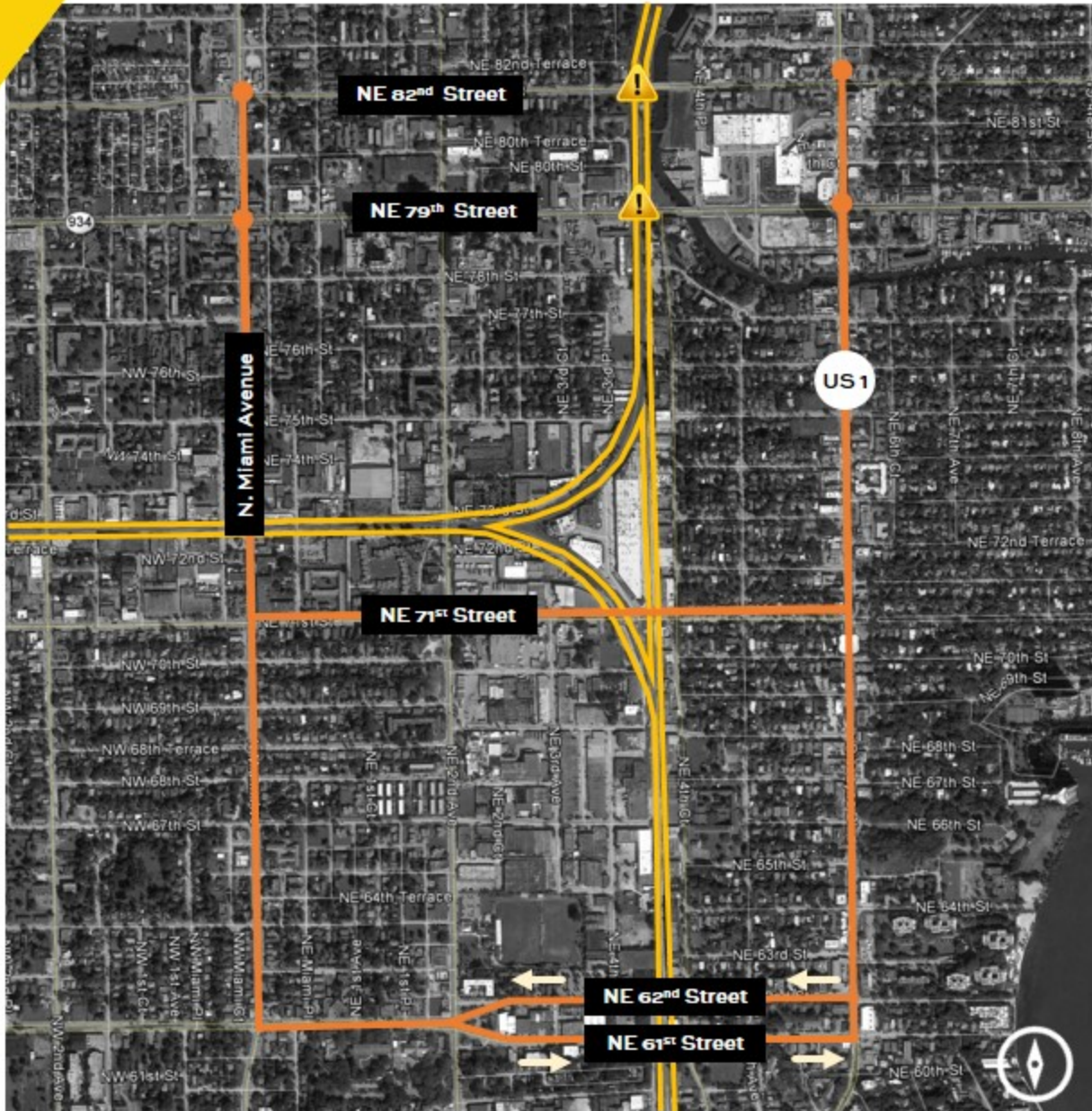
NE 82nd Street and the Florida East Coast Railway
Monday, February 13, 7 a.m. through **Thursday, February 23, 6 p.m.**

About All Aboard Florida

All Aboard Florida is a wholly-owned subsidiary of Florida East Coast Industries, one of Florida's oldest and largest full-service commercial real estate, transportation, and infrastructure companies, and the corporate parent company of Brightline and MiamiCentral.

###

NE 79th Street & 82nd Street Miami






From the East:
Travel South on Biscayne Blvd./US-1
West on Northeast 62nd Street
North on North Miami Avenue to
return to Northeast 79th Street and
Northeast 82nd Street.

From the West:
Travel South on North Miami Avenue
East on Northeast 61st Street
North on Biscayne Blvd./US-1 to
return to Northeast 79th Street

Alternate Detour From the West:
Travel east on 71st Street, North on
Biscayne Blvd./US-1 to return to
Northeast 79th Street

Alternate Detour From the East:
Travel west on 71st Street, North on
North Miami Avenue to return to
Northeast 79th Street

LEGEND

-  Temporary Road Closure at Railroad
-  Local Detour Route
-  Railroad

brightline